



276 Parliament road

, Middlesbrough, TS1 5QL

£1,200 Per month

Commercial unit in a prime location in TS1!!

Most recently used as a car show room but lending itself to a number of uses including Car or other Show Room, Carpet Shop, Gym/Dance Studio, General Retail Unit Or Storage Units.

With an abundance of space (approx 3300 sqft) the space incorporates 21.5m wide x 7.5m Storage Room With Glazing And Vehicular Access Door To The Front, WC And Separate Storage Room.

The Middle Retail Space Is Access By Double Doors And Measures 9m Wide x 7.5 And Contains An Office. The Front Is Glazed With A Pedestrian Access Door.

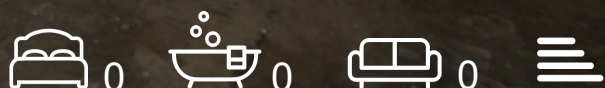
The Space To The Right Hand Side Of The Building Measures Approximately 9.5m x 7.5m. It Has Two Vehicular Access Doors And Is Currently Used For Storage. There Is A Kitchen Area To The Rear

Call Progression Property today to arrange a viewing or for more information.

- COMMERCIAL PREMISES
- LENDING ITSELF TO MANY USES
- 3300 SQFT/300 SQM
- PRIME LOCATION WITHIN TS1
- AVAILABLE NOW

Viewing

Please contact our Progression Property Office on 01642 063352 if you wish to arrange a viewing appointment for this property or require further information.



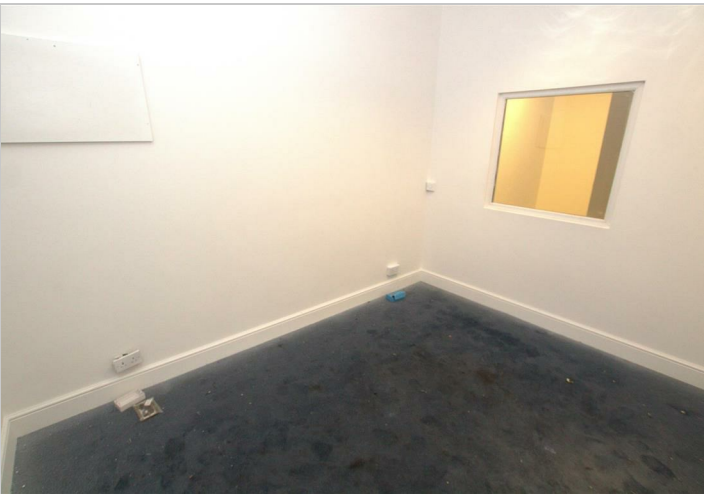
Floor Plan



Area Map



Energy Efficiency Graph



These particulars, whilst believed to be accurate are set out as a general outline only for guidance and do not constitute any part of an offer or contract. Intending purchasers should not rely on them as statements of representation of fact, but must satisfy themselves by inspection or otherwise as to their accuracy. No person in this firms employment has the authority to make or give any representation or warranty in respect of the property.